



IEC 61010-031

Edition 2.0 2015-05
REDLINE VERSION

INTERNATIONAL STANDARD



**Safety requirements for electrical equipment for measurement, control and laboratory use –
Part 031: Safety requirements for hand-held probe assemblies for electrical measurement and test**

INTERNATIONAL
ELECTROTECHNICAL
COMMISSION

ICS 19.080

ISBN 978-2-8322-2723-7

Warning! Make sure that you obtained this publication from an authorized distributor.

CONTENTS

FOREWORD.....	7
1 Scope and object.....	10
1.1 Scope	10
1.1.1 Probe assemblies included in scope	10
1.1.2 Probe assemblies excluded from scope	13
1.2 Object.....	13
1.2.1 Aspects included in scope	13
1.2.2 Aspects excluded from scope	13
1.3 Verification.....	13
1.4 Environmental conditions	13
1.4.1 Normal environmental conditions	13
1.4.2 Extended environmental conditions	14
2 Normative references	14
3 Terms and definitions	14
3.1 Parts and accessories.....	15
3.2 Electrical Quantities	16
3.3 Tests	17
3.4 Safety terms	17
3.5 Insulation	18
4 Tests	20
4.1 General.....	20
4.2 Sequence of tests	20
4.3 Reference test conditions.....	21
4.3.1 Environmental conditions.....	21
4.3.2 State of probe assemblies.....	21
4.3.3 Position of the probe assembly	21
4.3.4 Accessories	21
4.3.5 Covers and removable parts	21
4.3.6 Input and output voltages	21
4.3.7 Controls.....	21
4.3.8 Connections	21
4.3.9 Duty cycle.....	22
4.4 Testing in SINGLE FAULT CONDITION.....	22
4.4.1 General	22
4.4.2 Application of fault conditions	22
4.4.3 Duration of tests	23
4.4.4 Conformity after application of single fault conditions	23
4.5 Tests in REASONABLY FORESEEABLE MISUSE	24
4.5.1 General	24
4.5.2 Fuses	24
5 Marking and documentation	24
5.1 Marking.....	24
5.1.1 General	24
5.1.2 Identification	24
5.1.3 Fuses	25
5.1.4 Terminals CONNECTORS and operating devices.....	26

5.1.5	PARTS PROTECTED by double insulation or reinforced insulation	
5.1.5	RATING	26
5.2	Warning markings	26
5.3	Durability of markings	27
5.4	Documentation	27
5.4.1	General	27
5.4.2	Ratings Probe assembly rating	27
5.4.3	Probe assembly operation	27
5.4.4	MAINTENANCE Probe assembly maintenance and service	28
6	Protection against electric shock	29
6.1	General	29
6.1.1	EXCEPTIONS	
6.2	Determination of ACCESSIBLE parts	29
6.2.1	General	29
6.2.2	General Examination	29
6.2.3	Openings for pre-set controls	31
6.3	Permissible limits Limit values for ACCESSIBLE parts	31
6.3.1	General	31
6.3.2	VALUES Levels in NORMAL CONDITION	32
6.3.3	VALUES Levels in SINGLE FAULT CONDITION	32
6.3.4	Measurement of voltage and touch current	35
6.4	Insulation requirements for Means of protection against electric shock	38
6.4.1	General	38
6.4.2	CONNECTORS	39
6.4.2	HAND-HELD parts other than CONNECTORS	
6.4.3	Cables	
6.4.4	Impedance	46
6.4.5	Double insulation and reinforced insulation	
6.4.5	PROTECTIVE IMPEDANCE	46
6.4.6	BASIC INSULATION, SUPPLEMENTARY INSULATION, DOUBLE INSULATION and REINFORCED INSULATION	47
6.5	CLEARANCES and CREEPAGE DISTANCES	
6.5	Insulation requirements	47
6.5.1	The nature of insulation	47
6.5.2	Measuring circuits Insulation requirements for probe assemblies	52
6.6	Dielectric strength tests Procedure for voltage tests	59
6.6.1	REFERENCE TEST EARTH General	59
6.6.2	Humidity preconditioning	59
6.6.3	Conduct of tests	59
6.6.4	VOLTAGE TESTS Test voltages	60
6.6.5	Test procedures	62
6.7	Constructional requirements for protection against electric shock	63
6.7.1	General	63
6.7.2	Insulating materials	63
6.7.3	ENCLOSURES of probe assemblies with DOUBLE INSULATION or REINFORCED INSULATION	63
6.7.3	CORONA and PARTIAL DISCHARGES	
6.7.4	CABLE PROBE WIRE attachment	64
7	Protection against mechanical HAZARDS	67

8	Mechanical resistance to shock and impact Resistance to mechanical stresses	67
8.1	General	67
8.2	Rigidity test	68
8.3	Drop test	68
8.4	Impact swing test	68
9	Temperature limits and protection against the spread of fire	69
9.1	General	69
9.2	Temperature tests	70
10	Resistance to heat	70
10.1	Integrity of CLEARANCES AND CREEPAGE DISTANCES SPACINGS	70
10.2	Resistance to heat	70
11	Protection against HAZARDS from fluids	71
11.1	General	71
11.2	Cleaning	71
11.3	Specially protected probe assemblies	71
12	Components	71
12.1	General	71
12.2	Fuses	72
12.3	High integrity components	
12.3	PROBE WIRE	73
13	Prevention of HAZARD from arc flash and short-circuits	78
13.1	General	78
13.2	Exposed conductive parts	78
Annex A (normative)	Measuring circuits for ACCESSIBLE touch current (see 6.3)	80
A.1	Measuring circuits for a.c. with frequencies up to 1 MHz and for d.c	80
A.2	Measuring circuits for a.c. with sinusoidal frequencies up to 100 Hz and for d.c.	81
A.3	Current measuring circuit for electrical burns at high frequencies above 100 kHz	81
A.4	Current measuring circuit for WET contact LOCATIONS	83
Annex B (normative)	Standard test fingers (see 6.2)	84
Annex C (normative)	Measurement of CLEARANCES and CREEPAGE DISTANCES	87
Annex D (normative)	Routine spark tests on PROBE WIRE	91
D.1	General	91
D.2	Spark test procedure	91
D.3	Routine spark test method for PROBE WIRE	93
Annex E (informative)	4 mm CONNECTORS	95
E.1	General	95
E.2	Dimensions	95
Annex F (normative)	Measurement Categories	97
F.1	General	97
F.2	MEASUREMENT CATEGORIES	97
Annex G	Index of defined terms	99
Bibliography		101

Figure 1 — Examples of type A and C probe assemblies

Figure 1 – Examples of type A probe assemblies	11
--	----

Figure 2 – Examples of type B probe assemblies	11
Figure 3 – Examples of type C probe assemblies	12
Figure 4 – Example of application of metal foil for ACCESSIBLE current measurement	12
Figure 4 – Examples of type D probe assemblies	12
Figure 5 – Example of a STACKABLE CONNECTOR with a male CONNECTOR and a female TERMINAL	16
Figure 6 – Protection against touching a PROBE TIP (see 6.4.4)	16
Figure 3 6 – Methods for determination of ACCESSIBLE parts (see 6.2) and for voltage tests of (see 6.4.2)	30
Figure 5 7 – Charged Capacitance level versus voltage in NORMAL CONDITION AND SINGLE-FAULT CONDITION (see 6.3.2.3 6.3.2 c) and 6.3.3 c))	34
Figure 8 – Voltage and touch current measurement	35
Figure 9 – Voltage and touch current measurement for the reference CONNECTOR	36
Figure 10 – Voltage and touch current measurement with shielded test probe	37
Figure 11 – Maximum test probe input voltage for 70 mA touch current	38
Figure 12 – Protection by a PROTECTIVE FINGERGUARD	43
Figure 13 – Protection by distance	45
Figure 14 – Protection by tactile indicator	45
Figure 15 – Distance between conductors on an interface between two layers	50
Figure 16 – Distance between adjacent conductors along an interface of two layers	51
Figure 17 – Distance between adjacent conductors located between the same two layers	52
Figure 18 – Example of recurring peak voltage	56
Figure 7 19 – Flexing test	65
Figure 8 20 – Rotational flexing test for cable used in PROBE ASSEMBLIES (see 6.7.4)	67
Figure 9 21 – Impact swing test	69
Figure 22 – Indentation device	74
Figure A.1 – Measuring circuit for a.c. with frequencies up to 1 MHz and for d.c.	80
Figure A.2 – Measuring circuits for a.c. with sinusoidal frequencies up to 100 Hz and for d.c.	81
Figure A.3 – Current measuring circuit for electrical burns	82
Figure A.4 – Current measuring circuit for high frequency test probes	82
Figure A.4 A.5 – Current measuring circuit for WET contact LOCATIONS	83
Figure B.1 – Rigid test finger	84
Figure B.2 – Jointed test finger	85
Figure D.1 – Bead Chain Configuration (if applicable)	92
Figure E.1 – Recommended dimensions of 4 mm CONNECTORS	95
Figure F.1 – Example to identify the locations of MEASUREMENT CATEGORIES	98
Table 1 – Symbols	25
Table 2 – SPACINGS for unmated CONNECTORS RATED up to 1 000 V a.c. or 1 500 V d.c. with HAZARDOUS LIVE conductive parts	40
Table 2 3 – Multiplication factors for CLEARANCES of probe assembly rated for operation at altitudes up to 5 000 m	46
Table 4 – Test voltages for testing solid insulation	50

Table 5 – Minimum values for distance or thickness.....	51
Table 3 6 – CLEARANCES for probe assemblies of MEASUREMENT CATEGORIES II, III and IV	52
Table 4 7 – CLEARANCE values for the calculation of 6.5.2. 3.2.....	55
Table 8 – CLEARANCES for BASIC INSULATION in probe assemblies subjected to recurring peak voltages or WORKING VOLTAGES with frequencies above 30 kHz.....	57
Table 5 9 – CREEPAGE DISTANCES for basic insulation or supplementary insulation	57
Table 6 10 – Test voltages for BASIC INSULATION based on clearances.....	61
Table 7 11 – Correction factors according to test site altitude for test voltages for clearances	62
Table 8 12 – Pull forces for cable PROBE WIRE attachment tests	66
Table 13 – Diameter of mandrel and numbers of turns	75
Table C.1 – Relation between POLLUTION degrees and width of grooves Dimension of X.....	87
Table D.1 – Maximum centre-to-centre spacings of bead chains	91
Table D.2 – Formula for maximum speed of wire in terms of electrode length L of link- or bead-chain electrode	93
Table F.1 – Characteristics of MEASUREMENT CATEGORIES.....	98

Withd

INTERNATIONAL ELECTROTECHNICAL COMMISSION

SAFETY REQUIREMENTS FOR ELECTRICAL EQUIPMENT FOR MEASUREMENT, CONTROL AND LABORATORY USE –

Part 031: Safety requirements for hand-held probe assemblies for electrical measurement and test

FOREWORD

- 1) The International Electrotechnical Commission (IEC) is a worldwide organization for standardization comprising all national electrotechnical committees (IEC National Committees). The object of IEC is to promote international co-operation on all questions concerning standardization in the electrical and electronic fields. To this end and in addition to other activities, IEC publishes International Standards, Technical Specifications, Technical Reports, Publicly Available Specifications (PAS) and Guides (hereafter referred to as "IEC Publication(s)"). Their preparation is entrusted to technical committees; any IEC National Committee interested in the subject dealt with may participate in this preparatory work. International, governmental and non-governmental organizations liaising with the IEC also participate in this preparation. IEC collaborates closely with the International Organization for Standardization (ISO) in accordance with conditions determined by agreement between the two organizations.
- 2) The formal decisions or agreements of IEC on technical matters express, as nearly as possible, an international consensus of opinion on the relevant subjects since each technical committee has representation from all interested IEC National Committees.
- 3) IEC Publications have the form of recommendations for international use and are accepted by IEC National Committees in that sense. While all reasonable efforts are made to ensure that the technical content of IEC Publications is accurate, IEC cannot be held responsible for the way in which they are used or for any misinterpretation by any end user.
- 4) In order to promote international uniformity, IEC National Committees undertake to apply IEC Publications transparently to the maximum extent possible in their national and regional publications. Any divergence between any IEC Publication and the corresponding national or regional publication shall be clearly indicated in the latter.
- 5) IEC itself does not provide any attestation of conformity. Independent certification bodies provide conformity assessment services and, in some areas, access to IEC marks of conformity. IEC is not responsible for any services carried out by independent certification bodies.
- 6) All users should ensure that they have the latest edition of this publication.
- 7) No liability shall attach to IEC or its directors, employees, servants or agents including individual experts and members of its technical committees and IEC National Committees for any personal injury, property damage or other damage of any nature whatsoever, whether direct or indirect, or for costs (including legal fees) and expenses arising out of the publication, use of, or reliance upon, this IEC Publication or any other IEC Publications.
- 8) Attention is drawn to the Normative references cited in this publication. Use of the referenced publications is indispensable for the correct application of this publication.
- 9) Attention is drawn to the possibility that some of the elements of this IEC Publication may be the subject of patent rights. IEC shall not be held responsible for identifying any or all such patent rights.

This redline version of the official IEC Standard allows the user to identify the changes made to the previous edition. A vertical bar appears in the margin wherever a change has been made. Additions are in green text, deletions are in strikethrough red text.

International Standard IEC 61010-031 has been prepared by IEC technical committee 66: Safety of measuring, control and laboratory equipment.

It has the status of a group safety publication in accordance with IEC GUIDE 104.

IEC 61010-031 is a stand-alone standard. This second edition cancels and replaces the first edition published in 2002 and Amendment 1:2008. This edition constitutes a technical revision.

This edition includes the following significant changes from the first edition, as well as numerous other changes:

- a) Voltages above the levels of 30 V r.m.s., 42,4 V peak, or 60 V d.c. are deemed to be HAZARDOUS LIVE instead of 33 V r.m.s., 46,7 V peak, or 70 V d.c.
- b) Servicing is now included within the scope.
- c) Extended environmental conditions are included within the scope.
- d) New terms have been defined.
- e) Tests for REASONABLY FORESEEABLE MISUSE have been added, in particular for fuses.
- f) Additional instruction requirements for probe assembly operation have been specified.
- g) Limit values for ACCESSIBLE parts and for measurement of voltage and touch current have been modified.
- h) SPACINGS requirements for mating of CONNECTORS have been modified.
- i) PROBE TIPS and SPRING-LOADED CLIPS requirements have been modified. The PROTECTIVE FINGERGUARD replace the BARRIER with new requirements.
- j) Insulation requirements (6.5) and test procedures (6.6.5) have been rewritten and aligned when relevant with Part 1. Specific requirements have been added for solid insulation and thin-film insulation.
- k) The terminology for MEASUREMENT CATEGORY I has been replaced with the designation “not RATED for measurements within MEASUREMENT CATEGORIES II, III, or IV”.
- l) The flexing/pull test (6.7.4.3) has been partially rewritten.
- m) Surface temperature limits (Clause 10) have been modified to conform to the limits of IEC Guide 117.
- n) Requirements for resistance of PROBE WIRES to mechanical stresses have been added in Clause 12 and a new Annex D.
- o) Requirements have been added regarding the prevention of HAZARD from arc flash and short-circuits for SPRING-LOADED CLIPS.
- p) A new informative Annex E defines the dimension of the 4 mm banana CONNECTORS.

The text of this standard is based on the following documents:

FDIS	Report on voting
66/569/FDIS	66/571/RVD

Full information on the voting for the approval of this standard can be found in the report on voting indicated in the above table.

This publication has been drafted in accordance with the ISO/IEC Directives, Part 2.

A list of all parts of the IEC 61010 series, under the general title, *Safety requirements for electrical equipment for measurement, control, and laboratory use*, may be found on the IEC website.

In this standard, the following print types are used:

- requirements and definitions: in roman type;
- NOTES and EXAMPLES: in smaller roman type;
- *conformity and tests: in italic type;*
- terms used throughout this standard which have been defined in Clause 3: SMALL ROMAN CAPITALS.

The committee has decided that the contents of this publication will remain unchanged until the stability date indicated on the IEC web site under "<http://webstore.iec.ch>" in the data related to the specific publication. At this date, the publication will be

- reconfirmed,
- withdrawn,
- replaced by a revised edition, or
- amended.

IMPORTANT – The 'colour inside' logo on the cover page of this publication indicates that it contains colours which are considered to be useful for the correct understanding of its contents. Users should therefore print this document using a colour printer.

SAFETY REQUIREMENTS FOR ELECTRICAL EQUIPMENT FOR MEASUREMENT, CONTROL AND LABORATORY USE –

Part 031: Safety requirements for hand-held probe assemblies for electrical measurement and test

1 Scope and object

1.1 Scope

1.1.1 Probe assemblies included in scope

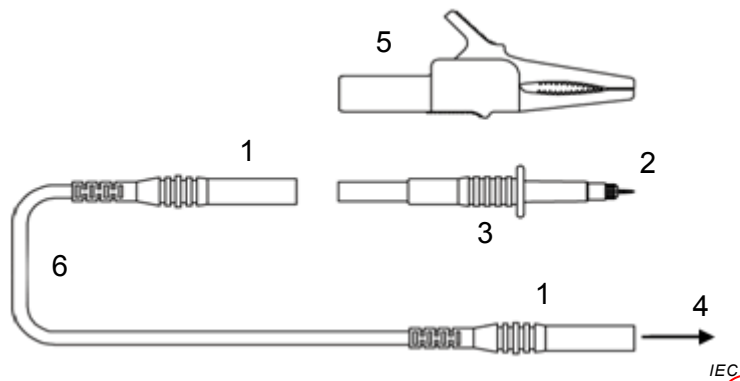
This part of IEC 61010 ~~applies to~~ specifies safety requirements for hand-held and hand-manipulated probe assemblies of the types described below, and their related accessories ~~which are intended for professional, industrial process, and educational use~~. These probe assemblies are for ~~use in the interface between an direct electrical phenomenon and connection between a part and electrical test or~~ and measurement equipment. They may be fixed to the equipment or be detachable accessories for the equipment.

- a) Type A: low-voltage and high-voltage, non-attenuating probe assemblies. Non-attenuating probe assemblies that are RATED for direct connection to voltages exceeding ~~33~~ 30 V r.m.s. ~~or 46,7, 42,4 V peak, or 70 60 V d.c.~~, but not exceeding 63 kV. They do not incorporate ~~active~~ components, ~~nor which are they~~ intended to provide a voltage divider function or a signal conditioning function, but they may contain ~~passive~~ non-attenuating components such as fuses (see Figure 1).
- b) Type B: high-voltage attenuating or divider probe assemblies. Attenuating or divider probe assemblies that are RATED for direct connection to secondary voltages exceeding 1 kV r.m.s. ~~or 1,5 kV d.c.~~ but not exceeding 63 kV r.m.s. ~~or d.c.~~ The divider function may be carried out wholly within the probe assembly, or partly within the test or measurement equipment to be used with the probe assembly (see Figure 2).
- c) Type C: low-voltage attenuating or divider probe assemblies. Attenuating ~~or divider or other signal conditioning~~ probe assemblies for direct connection to voltages ~~exceeding 33 V r.m.s. or 46,7 V peak or 70 V d.c., but~~ not exceeding 1 kV r.m.s. or 1,5 kV d.c. The signal conditioning function may be carried out wholly within the probe assembly, or partly within the test or measurement equipment intended to be used with the probe assembly (see Figure 3).
- d) Type D: low-voltage attenuating, non-attenuating or other signal conditioning probe assemblies, that are RATED for direct connection only to voltages not exceeding 30 V r.m.s., or 42,4 V peak, or 60 V d.c., and are suitable for currents exceeding 8 A (see Figure 4).

NOTE—PROBE ASSEMBLIES which

- are not within the definitions of types A, B or C, or,
 - which are designed to be powered from a low-voltage mains supply, or
 - include other features not specifically addressed in this standard
- may also need to meet the relevant requirements of other parts of IEC 61010 [6]¹⁾.

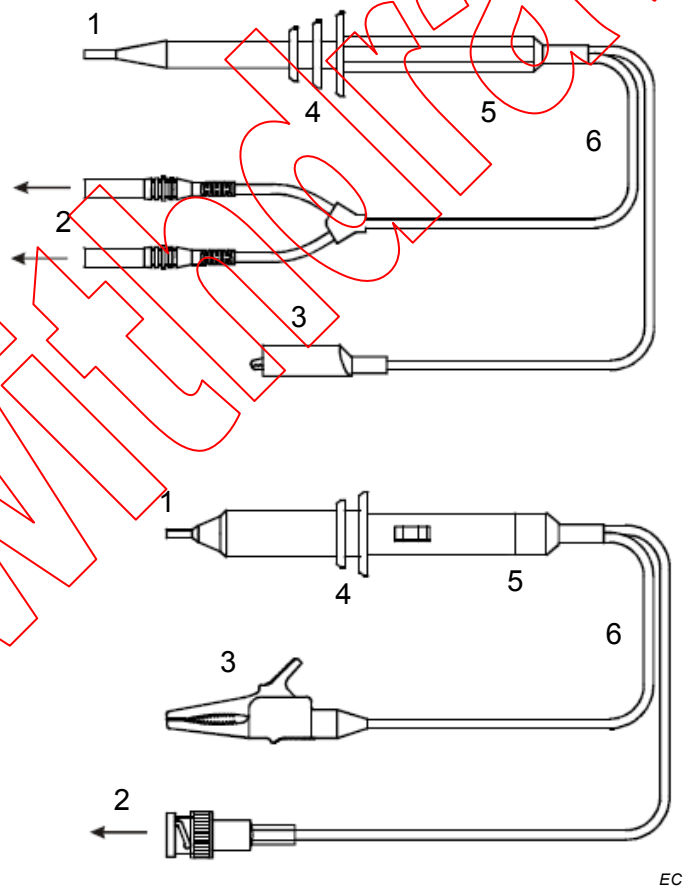
¹⁾—Figures in square brackets refer to the bibliography.



Key

- | | |
|----------------------|---|
| 1 typical connectors | 4 to equipment |
| 2 PROBE TIP | 5 Crocodile clip SPRING-LOADED CLIP |
| 3 probe body | 6 PROBE WIRE |

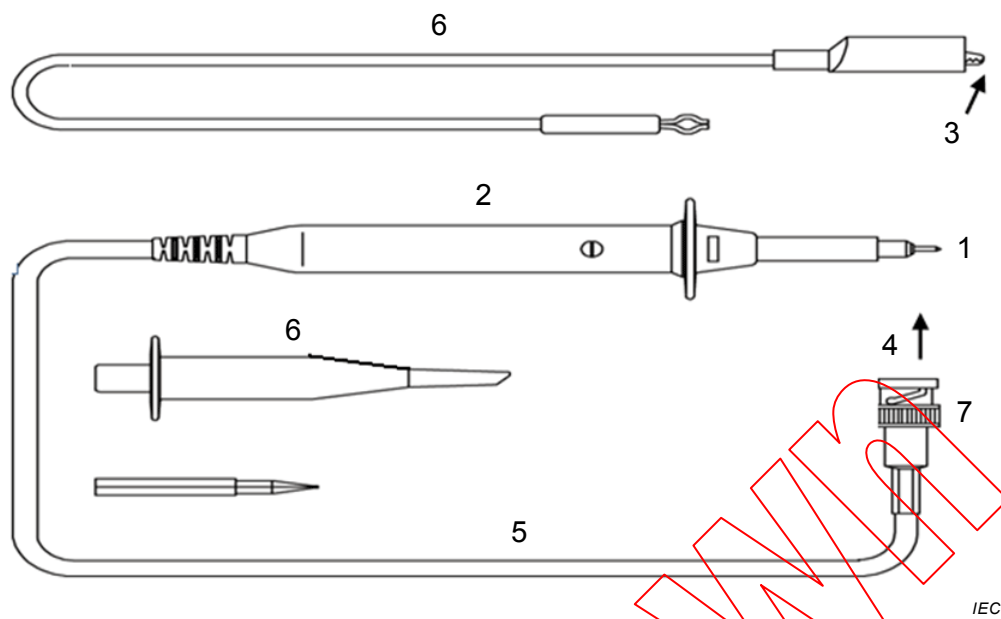
Figure 1 – Examples of type A probe assemblies



Key

- | | |
|-----------------------|---|
| 1 PROBE TIP | 4 BARRIER PROTECTIVE FINGERGUARD |
| 2 to equipment | 5 hand-held area of probe body |
| 3 reference CONNECTOR | 6 PROBE WIRE |

Figure 2 – Examples of type B probe assemblies

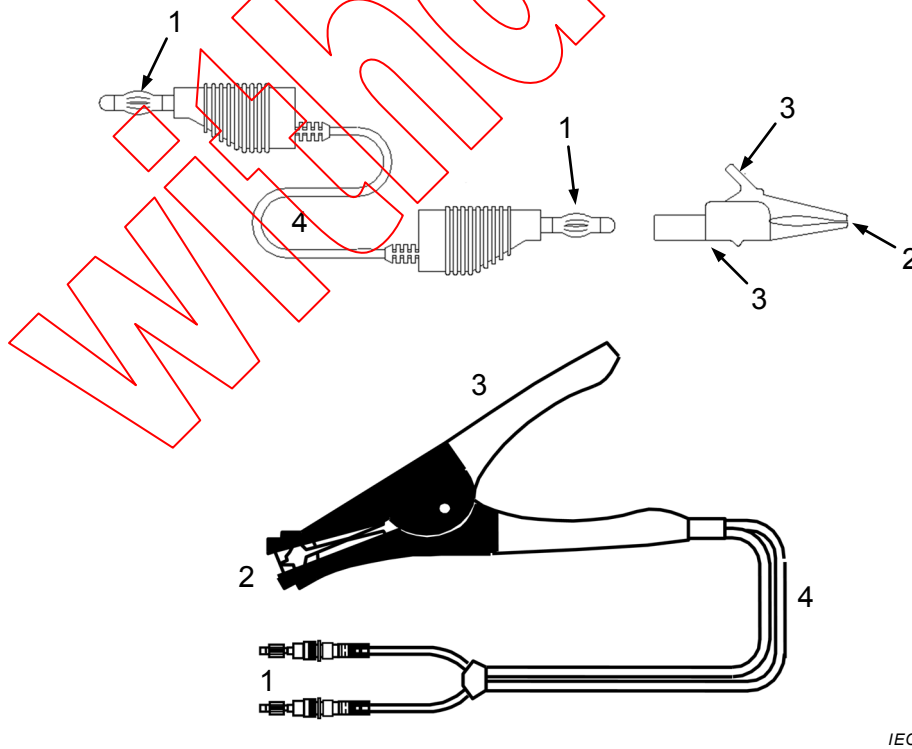


Key

- 1 PROBE TIP
- 2 probe body
- 3 reference CONNECTOR
- 4 to equipment

- 5 PROBE WIRE
- 6 examples of accessories
- 7 BNC CONNECTOR

Figure 3 – Examples of type C probe assemblies



Key

- 1 CONNECTOR
- 2 PROBE TIP
- 3 hand-held area of SPRING-LOADED CLIP or clamp
- 4 PROBE WIRE

Figure 4 – Examples of type D probe assemblies

1.1.2 Probe assemblies excluded from scope

This standard does not apply to current sensors within the scope of IEC 61010-2-032 (Hand-held and hand-manipulated current sensors), but may apply to their input measuring circuit leads and accessories.

1.2 Object

1.2.1 Aspects included in scope

The purpose of the requirements of this standard is to ensure that ~~the design and methods of construction used provide adequate protection for~~ HAZARDS to the OPERATOR and the surrounding area ~~against~~ are reduced to a tolerable level.

Requirements for protection against particular types of HAZARDS are given in Clauses 6 to 13, as follows:

- a) electric shock or burn (see Clauses 6, 10 and 11);
- b) mechanical HAZARDS (see Clauses 7, 8 and 11);
- c) excessive temperature (see Clause 9);
- d) spread of fire from the probe assembly (see Clause 9);
- e) arc flash (see Clause 13).

Additional requirements for probe assemblies which are designed to be powered from a low-voltage mains supply, or include other features not specifically addressed in this standard are in other parts of IEC 61010.

NOTE Attention is drawn to the ~~possible~~ existence of additional requirements ~~which may be specified by national authorities responsible for regarding~~ the health and safety of labour forces.

1.2.2 Aspects excluded from scope

This standard does not cover:

- a) reliable function, performance, or other properties of the probe assembly;
- b) effectiveness of transport packaging.
- ~~c) servicing (repair);~~
- ~~d) protection of servicing (repair) personnel.~~

NOTE ~~Servicing personnel are expected to be reasonably careful in dealing with obvious HAZARDS, but the design should protect against mishap in an appropriate manner, and the service documentation should point out any residual HAZARDS.~~

1.3 Verification

This standard also specifies methods of verifying that the probe assembly meets the requirements of this standard, through inspection, TYPE TESTS, and ROUTINE TESTS.

1.4 Environmental conditions

1.4.1 Normal environmental conditions

This standard applies to probe assemblies designed to be safe at least under the following conditions:

- a) altitude up to 2 000 m, ~~or above 2 000 m if specified by the manufacturer;~~
- b) ambient temperature of 5 °C to 40 °C; ~~or below 5 °C or above 40 °C if specified by the manufacturer;~~

- c) maximum relative humidity of 80 % for temperatures up to 31 °C decreasing linearly to 50 % relative humidity at 40 °C;
- d) applicable ~~RATED~~ POLLUTION DEGREE of the intended environment.

1.4.2 Extended environmental conditions

This standard applies to probe assemblies designed to be safe not only in the environmental conditions specified in 1.4.1, but also in any of the following conditions as RATED by the manufacturer of the probe assemblies:

- a) outdoor use;
- b) altitudes above 2 000 m;
- c) ambient temperatures below 5 °C or above 40 °C;
- d) relative humidities above the levels specified in 1.4.1;
- e) WET LOCATIONS.

2 Normative references

The following documents, in whole or in part, are normatively referenced in this document and are indispensable for its application. For dated references, only the edition cited applies. For undated references, the latest edition of the referenced document (including any amendments) applies.

IEC 60027 (all parts), *Letters symbols to be used in electrical technology*

~~IEC 60060 (all parts), *High-voltage test techniques*~~

~~IEC 60417 (all parts), *Graphical symbols for use on equipment*~~

IEC 60529, *Degrees of protection provided by enclosures (IP Code)*

~~IEC 60664-3, *Insulation coordination for equipment within low-voltage systems – Part 3: Use of coatings to achieve insulation coordination of printed board assemblies*~~

~~IEC 61010-1:2010, *Safety requirements for electrical equipment for measurement, control, and laboratory use – Part 1: General requirements*~~

~~IEC 61180-1:1992, *High-voltage test techniques for low voltage equipment – Part 1: Definitions, test and procedure requirements*~~

~~IEC 61180-2, *High-voltage test techniques for low-voltage equipment – Part 2: Test equipment*~~

~~IEC GUIDE 104, *The preparation of safety publications and the use of basic safety publications and group safety publications*~~

~~ISO/IEC GUIDE 51, *Safety aspects – Guidelines for their inclusion in standards*~~

~~ISO 7000, *Graphical symbols for use on equipment – Index and synopsis*~~



IEC 61010-031

Edition 2.0 2015-05

INTERNATIONAL STANDARD

NORME INTERNATIONALE



GROUP SAFETY PUBLICATION
PUBLICATION GROUPEE DE SÉCURITÉ

**Safety requirements for electrical equipment for measurement, control and laboratory use –
Part 031: Safety requirements for hand-held probe assemblies for electrical measurement and test**

**Règles de sécurité pour appareils électriques de mesure, de régulation et de laboratoire –
Partie 031: Exigences de sécurité pour sondes équipées tenues à la main pour mesure et essais électriques**

WARNING

CONTENTS

FOREWORD.....	7
1 Scope and object.....	10
1.1 Scope	10
1.1.1 Probe assemblies included in scope	10
1.1.2 Probe assemblies excluded from scope	13
1.2 Object.....	13
1.2.1 Aspects included in scope	13
1.2.2 Aspects excluded from scope	13
1.3 Verification.....	13
1.4 Environmental conditions	13
1.4.1 Normal environmental conditions	13
1.4.2 Extended environmental conditions	13
2 Normative references	14
3 Terms and definitions	14
3.1 Parts and accessories.....	14
3.2 Quantities	15
3.3 Tests	16
3.4 Safety terms	16
3.5 Insulation	17
4 Tests	18
4.1 General.....	18
4.2 Sequence of tests	19
4.3 Reference test conditions.....	19
4.3.1 Environmental conditions.....	19
4.3.2 State of probe assemblies.....	19
4.3.3 Position of the probe assembly	19
4.3.4 Accessories	20
4.3.5 Covers and removable parts	20
4.3.6 Input and output voltages	20
4.3.7 Controls.....	20
4.3.8 Connections	20
4.3.9 Duty cycle.....	20
4.4 Testing in SINGLE FAULT CONDITION.....	20
4.4.1 General	20
4.4.2 Application of fault conditions	20
4.4.3 Duration of tests	21
4.4.4 Conformity after application of fault conditions.....	21
4.5 Tests in REASONABLY FORESEEABLE MISUSE	22
4.5.1 General	22
4.5.2 Fuses	22
5 Marking and documentation.....	22
5.1 Marking.....	22
5.1.1 General	22
5.1.2 Identification	22
5.1.3 Fuses	23
5.1.4 CONNECTORS and operating devices	24

5.1.5	RATING	24
5.2	Warning markings	24
5.3	Durability of markings	24
5.4	Documentation	25
5.4.1	General	25
5.4.2	Probe assembly RATING	25
5.4.3	Probe assembly operation	25
5.4.4	Probe assembly maintenance and service	26
6	Protection against electric shock	26
6.1	General	26
6.2	Determination of ACCESSIBLE parts	27
6.2.1	General	27
6.2.2	Examination	27
6.2.3	Openings for pre-set controls	28
6.3	Limit values for ACCESSIBLE parts	28
6.3.1	General	28
6.3.2	Levels in NORMAL CONDITION	29
6.3.3	Levels in SINGLE FAULT CONDITION	29
6.3.4	Measurement of voltage and touch current	31
6.4	Means of protection against electric shock	34
6.4.1	General	34
6.4.2	CONNECTORS	35
6.4.3	PROBE TIPS	36
6.4.4	Impedance	38
6.4.5	PROTECTIVE IMPEDANCE	38
6.4.6	BASIC INSULATION, SUPPLEMENTARY INSULATION, DOUBLE INSULATION and REINFORCED INSULATION	39
6.5	Insulation requirements	39
6.5.1	The nature of insulation	39
6.5.2	Insulation requirements for probe assemblies	44
6.6	Procedure for voltage tests	50
6.6.1	General	50
6.6.2	Humidity preconditioning	50
6.6.3	Conduct of tests	50
6.6.4	Test voltages	51
6.6.5	Test procedures	53
6.7	Constructional requirements for protection against electric shock	54
6.7.1	General	54
6.7.2	Insulating materials	54
6.7.3	ENCLOSURES of probe assemblies with DOUBLE INSULATION or REINFORCED INSULATION	54
6.7.4	PROBE WIRE attachment	54
7	Protection against mechanical HAZARDS	58
8	Resistance to mechanical stresses	58
8.1	General	58
8.2	Rigidity test	59
8.3	Drop test	59
8.4	Impact swing test	59
9	Temperature limits and protection against the spread of fire	60

9.1	General.....	60
9.2	Temperature tests.....	61
10	Resistance to heat.....	61
10.1	Integrity of SPACINGS	61
10.2	Resistance to heat.....	61
11	Protection against HAZARDS from fluids	61
11.1	General.....	61
11.2	Cleaning	61
11.3	Specially protected probe assemblies	62
12	Components	62
12.1	General.....	62
12.2	Fuses.....	62
12.3	PROBE WIRE.....	63
12.3.1	General	63
12.3.2	RATING of PROBE WIRE	63
12.3.3	Pressure test at high temperature for insulations	63
12.3.4	Tests for resistance of insulation to cracking	65
12.3.5	Voltage test	65
12.3.6	Tensile test.....	66
13	Prevention of HAZARD from arc flash and short-circuits.....	68
13.1	General.....	68
13.2	Exposed conductive parts	68
Annex A (normative)	Measuring circuits for touch current (see 6.3).....	69
A.1	Measuring circuits for a.c. with frequencies up to 1 MHz and for d.c.	69
A.2	Measuring circuits for a.c. with sinusoidal frequencies up to 100 Hz and for d.c.	69
A.3	Current measuring circuit for electrical burns at frequencies above 100 kHz	70
A.4	Current measuring circuit for WET LOCATIONS	71
Annex B (normative)	Standard test fingers	73
Annex C (normative)	Measurement of CLEARANCES and CREEPAGE DISTANCES.....	76
Annex D (normative)	Routine spark tests on PROBE WIRE.....	78
D.1	General.....	78
D.2	Spark test procedure.....	78
D.3	Routine spark test method for PROBE WIRE	80
Annex E (informative)	4 mm CONNECTORS	82
E.1	General.....	82
E.2	Dimensions	82
Annex F (normative)	MEASUREMENT CATEGORIES	84
F.1	General.....	84
F.2	MEASUREMENT CATEGORIES	84
F.2.1	MEASUREMENT CATEGORY II.....	84
F.2.2	MEASUREMENT CATEGORY III.....	84
F.2.3	MEASUREMENT CATEGORY IV	84
F.2.4	Probe assemblies without a MEASUREMENT CATEGORY RATING.....	85
Annex G	Index of defined terms	86
Bibliography	87

Figure 1 – Examples of type A probe assemblies	11
Figure 2 – Examples of type B probe assemblies	11
Figure 3 – Examples of type C probe assemblies	12
Figure 4 – Examples of type D probe assemblies	12
Figure 5 – Example of a STACKABLE CONNECTOR with a male CONNECTOR and a female TERMINAL	15
Figure 6 – Methods for determination of ACCESSIBLE parts (see 6.2) and for voltage tests of (see 6.4.2)	28
Figure 7 – Capacitance level versus voltage in NORMAL CONDITION and SINGLE-FAULT CONDITION (see 6.3.2 c) and 6.3.3 c))	30
Figure 8 – Voltage and touch current measurement	31
Figure 9 – Voltage and touch current measurement for the reference CONNECTOR	32
Figure 10 – Voltage and touch current measurement with shielded test probe	33
Figure 11 – Maximum test probe input voltage for 70 mA touch current	34
Figure 12 – Protection by a PROTECTIVE FINGERGUARD	37
Figure 13 – Protection by distance	37
Figure 14 – Protection by tactile indicator	38
Figure 15 – Distance between conductors on an interface between two layers	42
Figure 16 – Distance between adjacent conductors along an interface of two layers	42
Figure 17 – Distance between adjacent conductors located between the same two layers	44
Figure 18 – Example of recurring peak voltage	47
Figure 19 – Flexing test	56
Figure 20 – Rotational flexing test	58
Figure 21 – Impact swing test	60
Figure 22 – Indentation device	64
Figure A.1 – Measuring circuit for a.c. with frequencies up to 1 MHz and for d.c.	69
Figure A.2 – Measuring circuits for a.c. with sinusoidal frequencies up to 100 Hz and for d.c.	70
Figure A.3 – Current measuring circuit for electrical burns	71
Figure A.4 – Current measuring circuit for high frequency test probes	71
Figure A.5 – Current measuring circuit for WET LOCATIONS	72
Figure B.1 – Rigid test finger	73
Figure B.2 – Jointed test finger	74
Figure D.1 – Bead Chain Configuration (if applicable)	79
Figure E.1 – Recommended dimensions of 4 mm CONNECTORS	82
Figure F.1 – Example to identify the locations of MEASUREMENT CATEGORIES	85
Table 1 – Symbols	23
Table 2 – SPACINGS for unmated CONNECTORS RATED up to 1 000 V a.c. or 1 500 V d.c. with HAZARDOUS LIVE conductive parts	36
Table 3 – Multiplication factors for CLEARANCES of probe assembly RATED for operation at altitudes up to 5 000 m	40
Table 4 – Test voltages for testing solid insulation	41
Table 5 – Minimum values for distance or thickness	43

Table 6 – CLEARANCES for probe assemblies of MEASUREMENT CATEGORIES II, III and IV	44
Table 7 – CLEARANCE values for the calculation of 6.5.2.3.2.....	46
Table 8 – CLEARANCES for BASIC INSULATION in probe assemblies subjected to recurring peak voltages or WORKING VOLTAGES with frequencies above 30 kHz.....	48
Table 9 – CREEPAGE DISTANCES for BASIC INSULATION or SUPPLEMENTARY INSULATION	49
Table 10 – Test voltages based on CLEARANCES.....	52
Table 11 – Correction factors according to test site altitude for test voltages for CLEARANCES	53
Table 12 – Pull forces for PROBE WIRE attachment tests.....	57
Table 13 – Diameter of mandrel and numbers of turns	65
Table C.1 – Dimension of X	76
Table D.1 – Maximum centre-to-centre spacings of bead chains	78
Table D.2 – Formula for maximum speed of wire in terms of electrode length L of link- or bead-chain electrode	80
Table F.1 – Characteristics of MEASUREMENT CATEGORIES.....	85

Withdawn

INTERNATIONAL ELECTROTECHNICAL COMMISSION

SAFETY REQUIREMENTS FOR ELECTRICAL EQUIPMENT FOR MEASUREMENT, CONTROL AND LABORATORY USE –

Part 031: Safety requirements for hand-held probe assemblies for electrical measurement and test

FOREWORD

- 1) The International Electrotechnical Commission (IEC) is a worldwide organization for standardization comprising all national electrotechnical committees (IEC National Committees). The object of IEC is to promote international co-operation on all questions concerning standardization in the electrical and electronic fields. To this end and in addition to other activities, IEC publishes International Standards, Technical Specifications, Technical Reports, Publicly Available Specifications (PAS) and Guides (hereafter referred to as "IEC Publication(s)"). Their preparation is entrusted to technical committees; any IEC National Committee interested in the subject dealt with may participate in this preparatory work. International, governmental and non-governmental organizations liaising with the IEC also participate in this preparation. IEC collaborates closely with the International Organization for Standardization (ISO) in accordance with conditions determined by agreement between the two organizations.
- 2) The formal decisions or agreements of IEC on technical matters express, as nearly as possible, an international consensus of opinion on the relevant subjects since each technical committee has representation from all interested IEC National Committees.
- 3) IEC Publications have the form of recommendations for international use and are accepted by IEC National Committees in that sense. While all reasonable efforts are made to ensure that the technical content of IEC Publications is accurate, IEC cannot be held responsible for the way in which they are used or for any misinterpretation by any end user.
- 4) In order to promote international uniformity, IEC National Committees undertake to apply IEC Publications transparently to the maximum extent possible in their national and regional publications. Any divergence between any IEC Publication and the corresponding national or regional publication shall be clearly indicated in the latter.
- 5) IEC itself does not provide any attestation of conformity. Independent certification bodies provide conformity assessment services and, in some areas, access to IEC marks of conformity. IEC is not responsible for any services carried out by independent certification bodies.
- 6) All users should ensure that they have the latest edition of this publication.
- 7) No liability shall attach to IEC or its directors, employees, servants or agents including individual experts and members of its technical committees and IEC National Committees for any personal injury, property damage or other damage of any nature whatsoever, whether direct or indirect, or for costs (including legal fees) and expenses arising out of the publication, use of, or reliance upon, this IEC Publication or any other IEC Publications.
- 8) Attention is drawn to the Normative references cited in this publication. Use of the referenced publications is indispensable for the correct application of this publication.
- 9) Attention is drawn to the possibility that some of the elements of this IEC Publication may be the subject of patent rights. IEC shall not be held responsible for identifying any or all such patent rights.

International Standard IEC 61010-031 has been prepared by IEC technical committee 66: Safety of measuring, control and laboratory equipment.

It has the status of a group safety publication in accordance with IEC GUIDE 104.

IEC 61010-031 is a stand-alone standard. This second edition cancels and replaces the first edition published in 2002 and Amendment 1:2008. This edition constitutes a technical revision.

This edition includes the following significant changes from the first edition, as well as numerous other changes:

- a) Voltages above the levels of 30 V r.m.s., 42,4 V peak, or 60 V d.c. are deemed to be HAZARDOUS LIVE instead of 33 V r.m.s., 46,7 V peak, or 70 V d.c.

- b) Servicing is now included within the scope.
- c) Extended environmental conditions are included within the scope.
- d) New terms have been defined.
- e) Tests for REASONABLY FORESEEABLE MISUSE have been added, in particular for fuses.
- f) Additional instruction requirements for probe assembly operation have been specified.
- g) Limit values for ACCESSIBLE parts and for measurement of voltage and touch current have been modified.
- h) SPACINGS requirements for mating of CONNECTORS have been modified.
- i) PROBE TIPS and SPRING-LOADED CLIPS requirements have been modified. The PROTECTIVE FINGERGUARD replace the BARRIER with new requirements.
- j) Insulation requirements (6.5) and test procedures (6.6.5) have been rewritten and aligned when relevant with Part 1. Specific requirements have been added for solid insulation and thin-film insulation.
- k) The terminology for MEASUREMENT CATEGORY I has been replaced with the designation “not RATED for measurements within MEASUREMENT CATEGORIES II, III, or IV”.
- l) The flexing/pull test (6.7.4.3) has been partially rewritten.
- m) Surface temperature limits (Clause 10) have been modified to conform to the limits of IEC Guide 117.
- n) Requirements for resistance of PROBE WIRES to mechanical stresses have been added in Clause 12 and a new Annex D.
- o) Requirements have been added regarding the prevention of HAZARD from arc flash and short-circuits for SPRING-LOADED CLIPS.
- p) A new informative Annex E defines the dimension of the 4 mm banana CONNECTORS.

The text of this standard is based on the following documents:

FDIS	Report on voting
66/569/FDIS	66/571/RVD

Full information on the voting for the approval of this standard can be found in the report on voting indicated in the above table.

This publication has been drafted in accordance with the ISO/IEC Directives, Part 2.

A list of all parts of the IEC 61010 series, under the general title, *Safety requirements for electrical equipment for measurement, control, and laboratory use*, may be found on the IEC website.

In this standard, the following print types are used:

- requirements and definitions: in roman type;
- NOTES and EXAMPLES: in smaller roman type;
- *conformity and tests: in italic type;*
- terms used throughout this standard which have been defined in Clause 3: SMALL ROMAN CAPITALS.

The committee has decided that the contents of this publication will remain unchanged until the stability date indicated on the IEC web site under "<http://webstore.iec.ch>" in the data related to the specific publication. At this date, the publication will be

- reconfirmed,
- withdrawn,
- replaced by a revised edition, or
- amended.

IMPORTANT – The 'colour inside' logo on the cover page of this publication indicates that it contains colours which are considered to be useful for the correct understanding of its contents. Users should therefore print this document using a colour printer.

Withdrawn

SAFETY REQUIREMENTS FOR ELECTRICAL EQUIPMENT FOR MEASUREMENT, CONTROL AND LABORATORY USE –

Part 031: Safety requirements for hand-held probe assemblies for electrical measurement and test

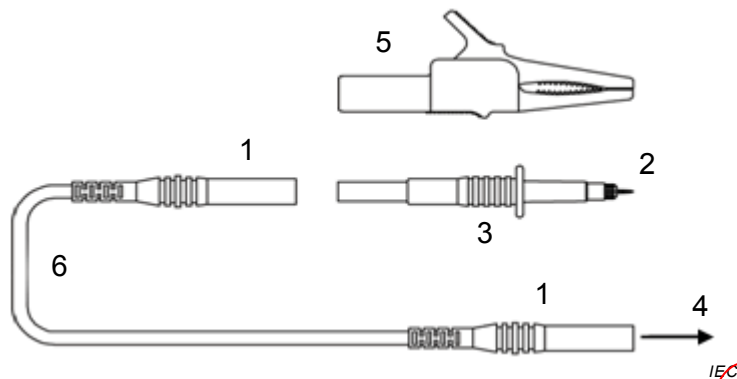
1 Scope and object

1.1 Scope

1.1.1 Probe assemblies included in scope

This part of IEC 61010 specifies safety requirements for hand-held and hand-manipulated probe assemblies of the types described below, and their related accessories. These probe assemblies are for direct electrical connection between a part and electrical test and measurement equipment. They may be fixed to the equipment or be detachable accessories for the equipment.

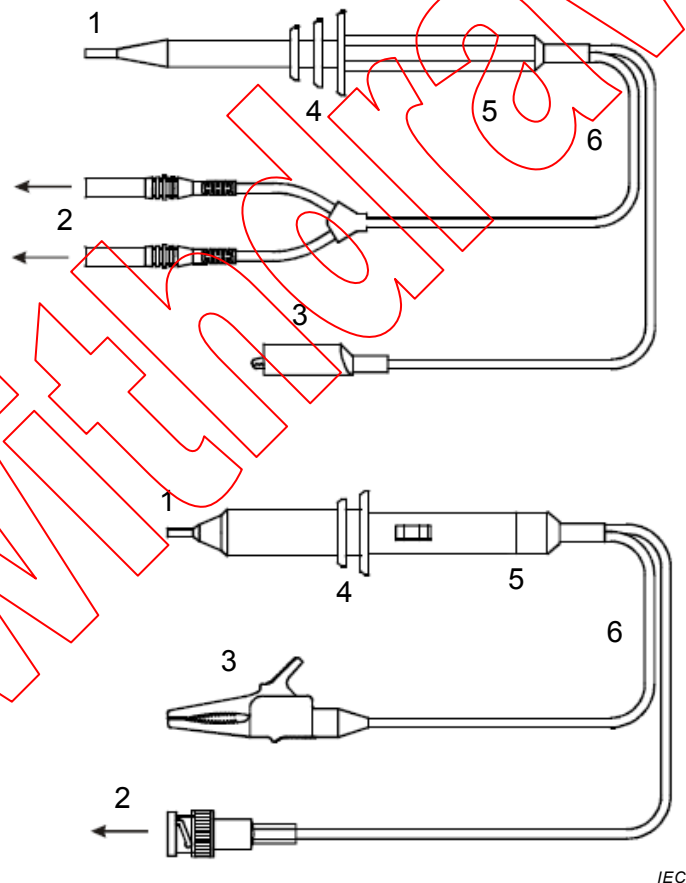
- a) Type A: low-voltage and high-voltage, non-attenuating probe assemblies. Non-attenuating probe assemblies that are **RATED** for direct connection to voltages exceeding 30 V r.m.s., 42,4 V peak, or 60 V d.c., but not exceeding 63 kV. They do not incorporate components which are intended to provide a voltage divider function or a signal conditioning function, but they may contain non-attenuating components such as fuses (see Figure 1.)
- b) Type B: high-voltage attenuating or divider probe assemblies. Attenuating or divider probe assemblies that are **RATED** for direct connection to secondary voltages exceeding 1 kV r.m.s. or 1,5 kV d.c. but not exceeding 63 kV r.m.s. or d.c. The divider function may be carried out wholly within the probe assembly, or partly within the test or measurement equipment to be used with the probe assembly (see Figure 2).
- c) Type C: low-voltage attenuating or divider probe assemblies. Attenuating or divider probe assemblies for direct connection to voltages not exceeding 1 kV r.m.s. or 1,5 kV d.c. The signal conditioning function may be carried out wholly within the probe assembly, or partly within the test or measurement equipment intended to be used with the probe assembly (see Figure 3).
- d) Type D: low-voltage attenuating, non-attenuating or other signal conditioning probe assemblies that are **RATED** for direct connection only to voltages not exceeding 30 V r.m.s., or 42,4 V peak, or 60 V d.c., and are suitable for currents exceeding 8 A (see Figure 4).



Key

- | | |
|----------------------|----------------------|
| 1 typical CONNECTORS | 4 to equipment |
| 2 PROBE TIP | 5 SPRING-LOADED CLIP |
| 3 probe body | 6 PROBE WIRE |

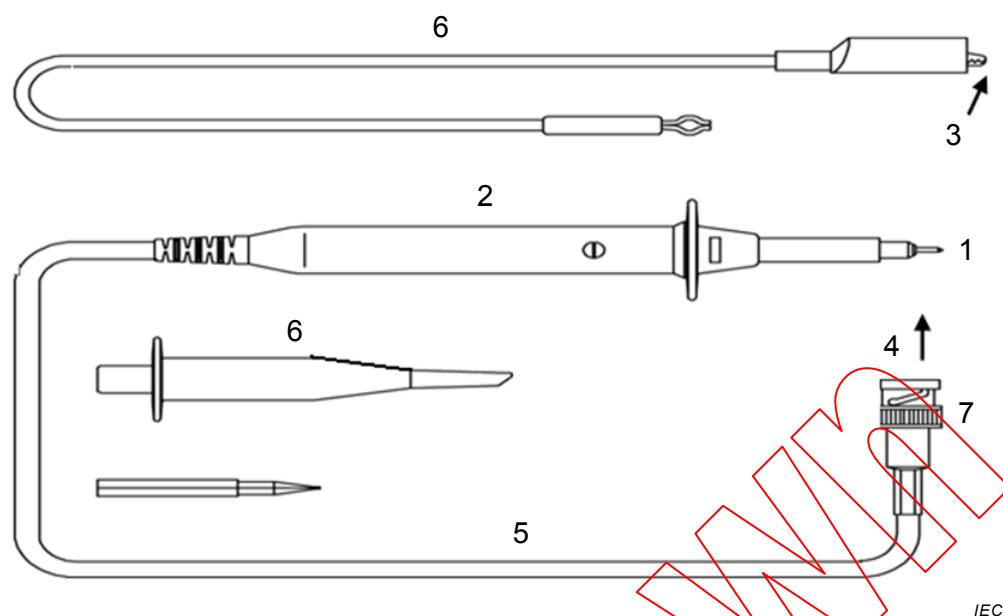
Figure 1 – Examples of type A probe assemblies



Key

- | | |
|-----------------------|--------------------------------|
| 1 PROBE TIP | 4 PROTECTIVE FINGERGUARD |
| 2 to equipment | 5 hand-held area of probe body |
| 3 reference CONNECTOR | 6 PROBE WIRE |

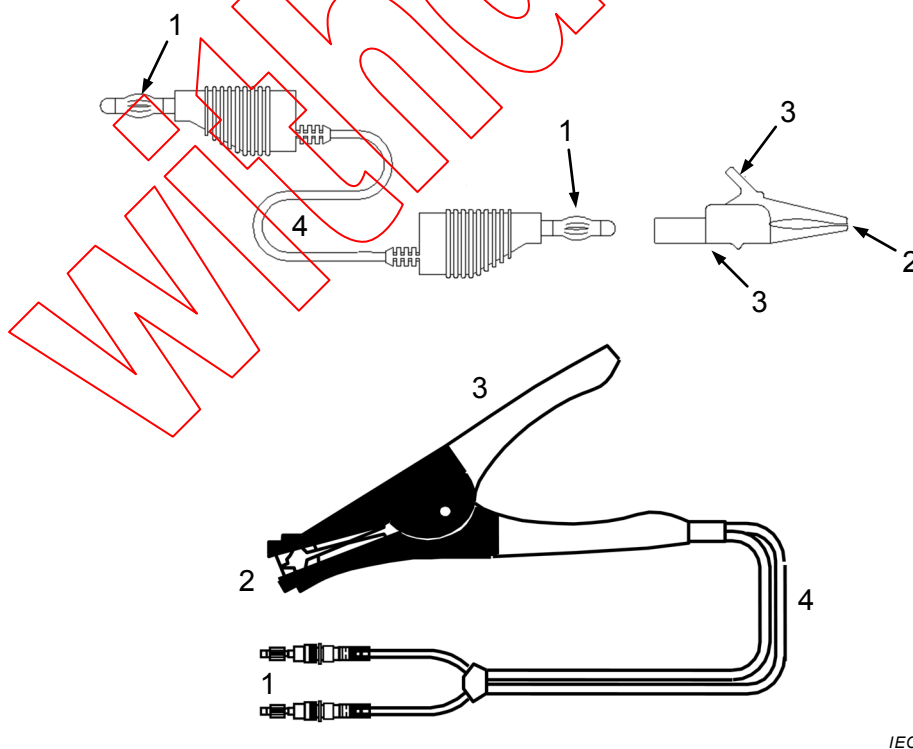
Figure 2 – Examples of type B probe assemblies



Key

- | | |
|-----------------------|---------------------------|
| 1 PROBE TIP | 5 PROBE WIRE |
| 2 probe body | 6 examples of accessories |
| 3 reference CONNECTOR | 7 BNC CONNECTOR |
| 4 to equipment | |

Figure 3 – Examples of type C probe assemblies



Key

- | | |
|-------------|---|
| 1 CONNECTOR | 3 hand-held area of SPRING-LOADED CLIP or clamp |
| 2 PROBE TIP | 4 PROBE WIRE |

Figure 4 – Examples of type D probe assemblies

1.1.2 Probe assemblies excluded from scope

This standard does not apply to current sensors within the scope of IEC 61010-2-032 (Hand-held and hand-manipulated current sensors), but may apply to their input measuring circuit leads and accessories.

1.2 Object

1.2.1 Aspects included in scope

The purpose of the requirements of this standard is to ensure that HAZARDS to the OPERATOR and the surrounding area are reduced to a tolerable level.

Requirements for protection against particular types of HAZARDS are given in Clauses 6 to 13, as follows:

- a) electric shock or burn (see Clauses 6, 10 and 11);
- b) mechanical HAZARDS (see Clauses 7, 8 and 11);
- c) excessive temperature (see Clause 9);
- d) spread of fire from the probe assembly (see Clause 9);
- e) arc flash (see Clause 13).

Additional requirements for probe assemblies which are designed to be powered from a low-voltage mains supply, or include other features not specifically addressed in this standard are in other parts of IEC 61010.

NOTE Attention is drawn to the possible existence of additional requirements regarding the health and safety of labour forces.

1.2.2 Aspects excluded from scope

This standard does not cover:

- a) reliable function, performance, or other properties of the probe assembly;
- b) effectiveness of transport packaging.

1.3 Verification

This standard also specifies methods of verifying that the probe assembly meets the requirements of this standard, through inspection, TYPE TESTS, and ROUTINE TESTS.

1.4 Environmental conditions

1.4.1 Normal environmental conditions

This standard applies to probe assemblies designed to be safe at least under the following conditions:

- a) altitude up to 2 000 m;
- b) ambient temperature of 5 °C to 40 °C;
- c) maximum relative humidity of 80 % for temperatures up to 31 °C decreasing linearly to 50 % relative humidity at 40 °C;
- d) applicable POLLUTION DEGREE of the intended environment.

1.4.2 Extended environmental conditions

This standard applies to probe assemblies designed to be safe not only in the environmental conditions specified in 1.4.1, but also in any of the following conditions as RATED by the manufacturer of the probe assemblies:

- a) outdoor use;
- b) altitudes above 2 000 m;
- c) ambient temperatures below 5 °C or above 40 °C;
- d) relative humidities above the levels specified in 1.4.1;
- e) WET LOCATIONS.

2 Normative references

The following documents, in whole or in part, are normatively referenced in this document and are indispensable for its application. For dated references, only the edition cited applies. For undated references, the latest edition of the referenced document (including any amendments) applies.

IEC 60027 (all parts), *Letters symbols to be used in electrical technology*

IEC 60529, *Degrees of protection provided by enclosures (IP Code)*

IEC 61010-1:2010, *Safety requirements for electrical equipment for measurement, control, and laboratory use – Part 1: General requirements*

IEC 61180-1:1992, *High-voltage test techniques for low voltage equipment – Part 1: Definitions, test and procedure requirements*

IEC 61180-2, *High-voltage test techniques for low-voltage equipment – Part 2: Test equipment*

IEC GUIDE 104, *The preparation of safety publications and the use of basic safety publications and group safety publications*

ISO/IEC GUIDE 51, *Safety aspects – Guidelines for their inclusion in standards*