
**Information technology — IT
Enabled Services-Business Process
Outsourcing (ITES-BPO) lifecycle
processes —**

**Part 3:
Measurement framework (MF) and
organization maturity model (OMM)**

*Technologies de l'information — Processus du cycle de vie de la
délocalisation du processus d'affaires des services activés par IT —
Partie 3: Modèle de maturité de l'organisation (OMM) et cadre de
mesure (MF)*

**COPYRIGHT PROTECTED DOCUMENT**

© ISO/IEC 2016, Published in Switzerland

All rights reserved. Unless otherwise specified, no part of this publication may be reproduced or utilized otherwise in any form or by any means, electronic or mechanical, including photocopying, or posting on the internet or an intranet, without prior written permission. Permission can be requested from either ISO at the address below or ISO's member body in the country of the requester.

ISO copyright office
Ch. de Blandonnet 8 • CP 401
CH-1214 Vernier, Geneva, Switzerland
Tel. +41 22 749 01 11
Fax +41 22 749 09 47
copyright@iso.org
www.iso.org

Contents

Page

| | |
|---|-----------|
| Foreword | iv |
| Introduction | v |
| 1 Scope | 1 |
| 2 Normative references | 1 |
| 3 Terms and definitions | 2 |
| 4 Overview of measurement framework (MF) and organization maturity model (OMM) | 2 |
| 5 ITES-BPO measurement framework (MF) for process capability | 4 |
| 6 Rating and aggregating process attributes | 6 |
| 6.1 Process attributes rating scale | 6 |
| 6.2 <i>Process attribute ratings method</i> | 7 |
| 7 Process capability level model — Achievement of process capability levels | 7 |
| 8 Organization maturity model (OMM) | 8 |
| 8.1 General | 8 |
| 8.2 Structure of the ITES-BPO organization maturity model (OMM) | 9 |
| 9 Definition of organization maturity levels | 10 |
| 9.1 Level 0 organization — Immature | 10 |
| 9.2 Level 1 organization — Basic | 10 |
| 9.3 Level 2 organization — Managed activities | 10 |
| 9.4 Level 3 organization — Managed organization | 10 |
| 9.5 Level 4 organization — Strategic alignment | 11 |
| 9.6 Level 5 organization — Transformational | 11 |
| 10 Rules for deriving maturity levels from process attribute ratings | 12 |
| 10.1 Overview | 12 |
| 10.2 Maturity level 1 | 12 |
| 10.3 Maturity level 2 | 12 |
| 10.4 Maturity level 3 | 13 |
| 10.5 Maturity level 4 | 14 |
| 10.6 Maturity level 5 | 15 |
| 11 Conditions for inclusion of process areas | 16 |
| Annex A (informative) Conformity of the measurement framework | 18 |
| Annex B (informative) Conformity of the maturity model | 22 |
| Bibliography | 24 |

Foreword

ISO (the International Organization for Standardization) and IEC (the International Electrotechnical Commission) form the specialized system for worldwide standardization. National bodies that are members of ISO or IEC participate in the development of International Standards through technical committees established by the respective organization to deal with particular fields of technical activity. ISO and IEC technical committees collaborate in fields of mutual interest. Other international organizations, governmental and non-governmental, in liaison with ISO and IEC, also take part in the work. In the field of information technology, ISO and IEC have established a joint technical committee, ISO/IEC JTC 1.

The procedures used to develop this document and those intended for its further maintenance are described in the ISO/IEC Directives, Part 1. In particular the different approval criteria needed for the different types of document should be noted. This document was drafted in accordance with the editorial rules of the ISO/IEC Directives, Part 2 (see www.iso.org/directives).

Attention is drawn to the possibility that some of the elements of this document may be the subject of patent rights. ISO and IEC shall not be held responsible for identifying any or all such patent rights. Details of any patent rights identified during the development of the document will be in the Introduction and/or on the ISO list of patent declarations received (see www.iso.org/patents).

Any trade name used in this document is information given for the convenience of users and does not constitute an endorsement.

For an explanation on the meaning of ISO specific terms and expressions related to conformity assessment, as well as information about ISO's adherence to the World Trade Organization (WTO) principles in the Technical Barriers to Trade (TBT) see the following URL: www.iso.org/iso/foreword.html.

The committee responsible for this document is ISO/IEC JTC 1, *Information technology*, Subcommittee SC 40, *IT Service Management and IT Governance*.

A list of all parts in the ISO/IEC 30105 series can be found on the ISO website.

Introduction

ITES-BPO services encompass the delegation of one or more IT enabled business processes to a service provider who uses appropriate technology to deliver service. Such a service provider manages, delivers, improves and administers the outsourced business processes in accordance with predefined and measurable performance metrics. This covers diverse business process areas such as finance, human resource management, administration, health care, banking and financial services, supply chain management, travel and hospitality, media, market research, analytics, telecommunication, manufacturing, etc. These services provide business solutions to customers across the globe and form part of the core service delivery chain for customers.

ISO/IEC 30105 (all parts) specifies the lifecycle processes requirements involved in the ITES-BPO industry.

- It provides an overarching standard for all aspects of ITES-BPO industry from the view of the service provider that performs the outsourced business processes. This is applicable for any ITES-BPO service provider providing services to customers through contracts and in industry verticals.
- It covers the entire outsourcing lifecycle and defines the processes that are considered to be good practices.
- It is an improvement standard that enables risk determination and improvement for service providers performing outsourced business processes. It also serves as a process reference model for service providers.
- It focuses on IT enabled business processes which are outsourced.
- It is generic and can be applied to all IT enabled business process outsourced services, regardless of type, size and the nature of the services delivered.
- Process improvement implemented using ISO/IEC 30105 (all parts) can lead to clear return on investment for customers and service providers.
- Alignment to ISO/IEC 30105 (all parts) can improve consistency, delivery quality and predictability in delivery of services.

[Figure 1](#) illustrates the key entities and relationships involved in an ITES-BPO service. It includes the customer, the ITES-BPO service provider and various levels of suppliers. This is as per the supply chain relationship depicted in ISO/IEC 20000-1:2011, 7.2.

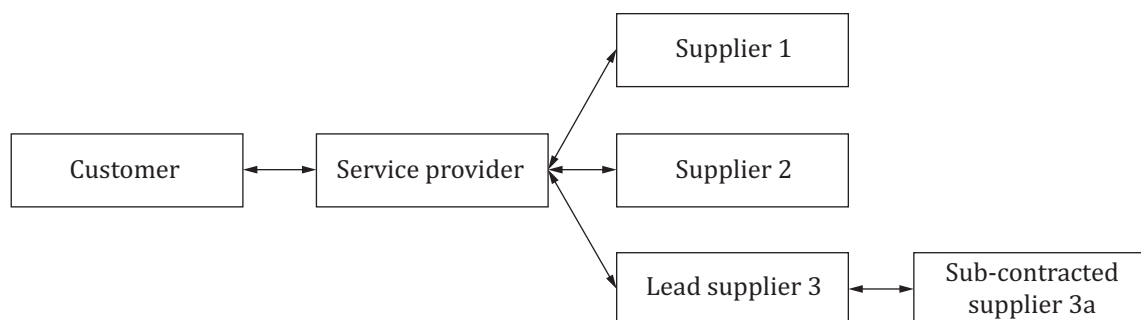


Figure 1 — ITES-BPO key entities

This document details a measurement framework (MF) and an organization maturity model (OMM). It provides the overview of how an organization can use the PRM and PAM to measure their capability and maturity levels.

This document is to be used in concurrence with the other parts of ISO/IEC 30105 and the assessment approach provided by ISO/IEC 33002 for assessing processes.

In this document, the following clauses of ISO/IEC 33020 have been replicated:

- Clause 5: Measurement framework;
- Clause 6: Extract of selected parts of rating and aggregating process attributes;
- Clause 7: Capability level model.

Information technology — IT Enabled Services-Business Process Outsourcing (ITES-BPO) lifecycle processes —

Part 3: Measurement framework (MF) and organization maturity model (OMM)

1 Scope

ISO/IEC 30105 specifies the lifecycle process requirements performed by the IT enabled business process outsourcing service provider for the outsourced business processes. It defines the processes to plan, establish, implement, operate, monitor, review, maintain and improve its services. This document:

- covers IT enabled business processes that are outsourced;
- is not intended to cover IT services but includes similar, relevant process for completeness;
- is applicable to the service provider, not to the customer;
- is applicable to all lifecycle processes of ITES-BPO;
- serves as a measurement framework for processes and provide an organization maturity model for organizations providing ITES-BPO services that:
 - conforms to the requirements of ISO/IEC 33003 and ISO/IEC 33004;
 - supports the performance assessment by providing a framework to measure and derive capability and organization maturity levels.

2 Normative references

The following documents are referred to in the text in such a way that some or all of their content constitutes requirements of this document. For dated references, only the edition cited applies. For undated references, the latest edition of the referenced document (including any amendments) applies.

ISO/IEC 33002, *Information technology — Process assessment — Requirements for performing process assessment*

ISO/IEC 33003, *Information technology — Process assessment — Requirements for process measurement frameworks*

ISO/IEC 33004:2015, *Information technology — Process assessment — Requirements for process reference, process assessment and maturity models*

ISO/IEC 33020:2015, *Information technology — Process assessment — Process measurement framework for assessment of process capability*

ISO/IEC 30105-2:2016, *Information technology — IT Enabled Services-Business Process Outsourcing (ITES-BPO) lifecycle processes — Part 2: Process assessment model*